

Model T1000



Primary Injection and Test Equipment

Features :

- Relay & CT Tester function
- Multimeter Function
- Easy to control
- External PC control function (Optional)
- Advanced high power constant current source with pulse width modulation technology

Specifications

High power AC current output (I1)	
Range	2A~50A 50A~1000A
Accuracy	±0.5%
Output voltage	20V 7V
Max Power	7000VA
Load time	1000A 2min

Ammeter	
Range	0~6A AC/DC
	0~2000A AC with external CT
Accuracy	±1%

Voltmeter	
Range	0~600V AC/DC
Accuracy	±1%

Binary inputs	
Number	2 (auto detection)
Input characteristics	±30~±250V DC, or potential free
Time resolution	±1ms(0.001~1s) ±0.1%(1~9999.999s)
Max. measuring time	9999.999s

Binary output	
Number	1
Type	Potential free relay contacts
Break capacity AC	Vmax 250V AC / Imax 8A / Pmax 2000VA
Break capacity DC	Vmax 250V DC / Imax 8A / Pmax 150W

Power supply	
Nominal input voltage	220Vac
Permissible input voltage	-20%~+15%
Nominal frequency	50~60Hz
Permissible frequency	45~65Hz

Others	
Operation temperature	-5~+50°C
Operation humidity	5~95%, non-condensing
Weight	30kg
Dimensions (W x H x D)	260 x 330 x 500 mm
PC connection	USB
Ground Socket (earth)	4 mm banana socket; front side

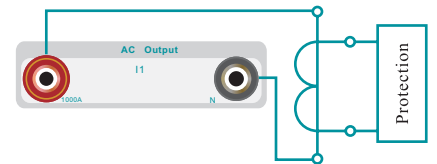
High power AC voltage output (U1)	
Range	10~250V
Accuracy	±0.5%
Power	250VA(125V)
Load time	continuous

High power DC voltage output (Udc)	
Range	10~300V
Accuracy	±0.5%
Power	600W
Load time	Output : <1A >1A
	Time : continuous Max 60min

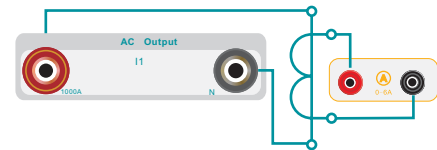
Auxiliary DC voltage output (Aux Udc)	
Range	20~240V
Accuracy	±1%
Power	55W at 110V/110W at 220V
Load time	continuous at 0.5A

Certificates	
EMC (Emission)	IEC-61000-3-2/3
EMC (Immunity)	IEC 61000-4-2/3/4/5/6/11
Safety	IEC 61010-1

Inject current into CT's primary side



CT Ratio

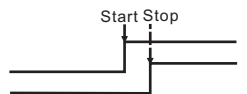
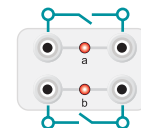
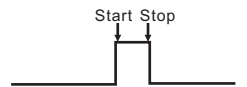
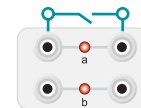


Ammeter and voltmeter



Internal measurement
External measurement

Single/ Dual timer



Offline Test

Menu

T1000 Universal Tester		V1.0
Any test	Relay test	Auxiliary DC Report view
CT test	Timer	System Setting PC control

Manual & Meter

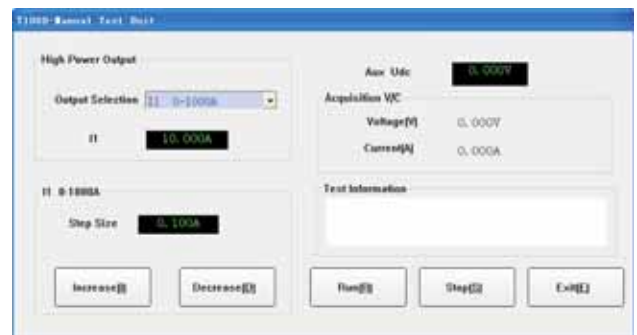
Manual & Meter		F1 ↑
AC-I1 1000A ▼	I1 50.00A	
<p>V 005.00V</p> <p>A 001.00A</p> <p>05.000Ω</p>		

Motor overload test

Motor 1000A		F1 ↑
Offset	Time	
I1 000.00A		
Test> Press Enter		
I1 050.00A		

Software

Manual Test



Auto Test

